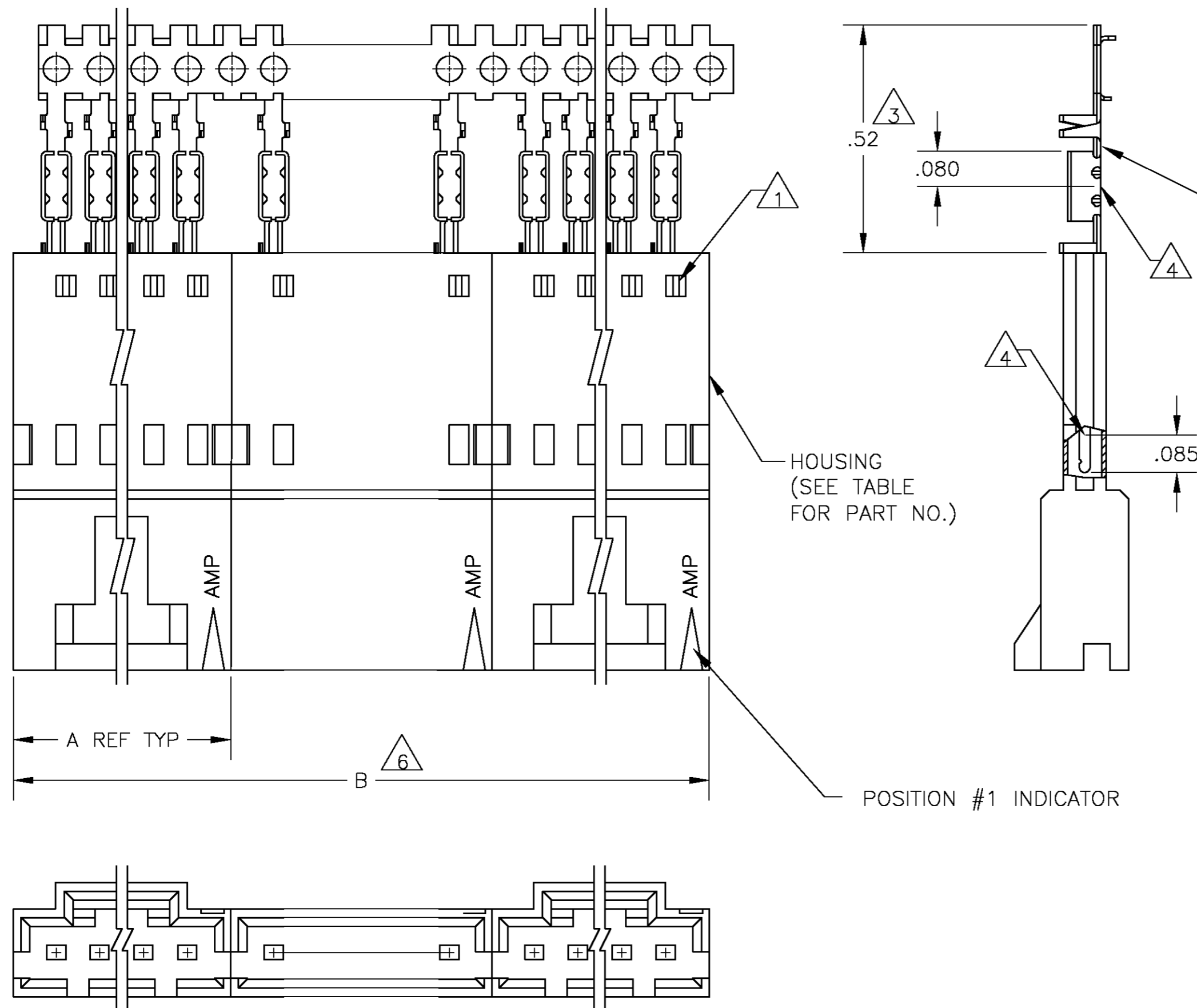


THIS DRAWING IS UNPUBLISHED. RELEASED FOR PUBLICATION
 © COPYRIGHT BY TYCO ELECTRONICS CORPORATION. ALL RIGHTS RESERVED.

LOC	DIST	REVISIONS			
P	LTR	DESCRIPTION	DATE	DWN	APVD
AD	00	J	EC 0G3C 0766 04	27DEC04	BSV JG



CONTACT IDENTIFICATION LETTER "C" (LOCATED IN THIS AREA)

HOUSING (SEE TABLE FOR PART NO.)

POSITION #1 INDICATOR

- 1 CONTACTS ARE LATCHED INTO THE PRELOAD WINDOWS
- 2 USE WITH #26-#30 AWG WIRE SIZE, .054/.030 INSULATION DIAMETER, .015 MAXIMUM INSULATION THICKNESS
- 3 THE DIMENSION APPLIES WITH THE FORWARD PRELOAD STOP IN CONTACT WITH THE HOUSING SURFACE
- 4 POINT OF MEASUREMENT FOR PLATING THICKNESS
- 5. FOR INDIVIDUAL ASSEMBLIES SEE PART NUMBER 103658
- 6 ASSEMBLIES ARE JOINED BY THE CARRIER STRIP. ORDER QUANTITY REFLECTS TOTAL NUMBER OF INDIVIDUAL ASSEMBLIES REQUIRED. SEE TABLE FOR NUMBER OF ASSEMBLIES PER STRIP.
- 7 MATERIAL- HOUSING: FLAME RETARDANT THERMOPLASTIC, COLOR: BLACK PINS: PHOS. BRONZE
- 8 FINISH- PINS: .000015 GOLD IN THE CONTACT AREA, .000050-.000100 BRIGHT TIN-LEAD ON THE TERMINATION AREA, OVER .000050 NICKEL.
- 9 FINISH- PINS: .000015 GOLD IN THE CONTACT AREA, .000050-.000100 MATTE TIN ON THE TERMINATION AREA, OVER .000050 NICKEL.

2	2.59	1.295	1-103653-1	12	6-103948-1	
2	2.39	1.195	1-103653-0	11	6-103948-0	
2	2.19	1.095	103653-9	10	5-103948-9	
2	1.99	.995	103653-8	9	5-103948-8	
2	1.79	.895	103653-7	8	5-103948-7	
3	2.39	.795	103653-6	7	5-103948-6	
2	1.39	.695	103653-5	6	5-103948-5	
4	2.38	.595	103653-4	5	5-103948-4	
4	1.98	.495	103653-3	4	5-103948-3	
5	1.98	.395	103653-2	3	5-103948-2	
8	2.36	.295	103653-1	2	5-103948-1	
2	2.59	1.295	1-103653-1	12	1-103948-1	
2	2.39	1.195	1-103653-0	11	1-103948-0	
2	2.19	1.095	103653-9	10	103948-9	
2	1.99	.995	103653-8	9	103948-8	
2	1.79	.895	103653-7	8	103948-7	
3	2.39	.795	103653-6	7	103948-6	
2	1.39	.695	103653-5	6	103948-5	
4	2.38	.595	103653-4	5	103948-4	
4	1.98	.495	103653-3	4	103948-3	
5	1.98	.395	103653-2	3	103948-2	
8	2.36	.295	103653-1	2	103948-1	
PLATING	6	B	A	HOUSING PART NUMBER	NO OF POSN	ASSEMBLY PART NUMBER ON STRIP

THIS DRAWING IS A CONTROLLED DOCUMENT.

DWN R BROWN 26JUL00
 CHK K WRIGHT 26JUL00
 APVD K WRIGHT 26JUL00

TOLERANCES UNLESS OTHERWISE SPECIFIED:
 0 PLC ± -
 1 PLC ± -
 2 PLC ± .02
 3 PLC ± .005
 4 PLC ± - ± -
 ANGLES ± - ± -
 FINISH SEE TABLE

NAME SHROUDED PIN ASSY, AMPMODU MTE, SINGLE ROW, .100 CL, POLARIZED, W/ LATCH WINDOWS, FOR #26-#30 AWG WIRE SIZE, STRIP FORM

108-25034
 114-25026

SIZE A2 CAGE CODE 00779 DRAWING NO. C=103948 RESTRICTED TO -

WEIGHT - SCALE 4:1 SHEET 1 OF 1 REV J

CUSTOMER DRAWING